



Child Care Health Consultation

Strengthening Our System in
King County

Funded by
 King County
Best Starts for
KIDS

Welcome

- Welcome everyone!
- We are pleased to bring people together
- We have the beginnings of a great team
- You're part of the team too!



Table Introductions

Share your:

- Name
- Organization
- Years promoting children's health



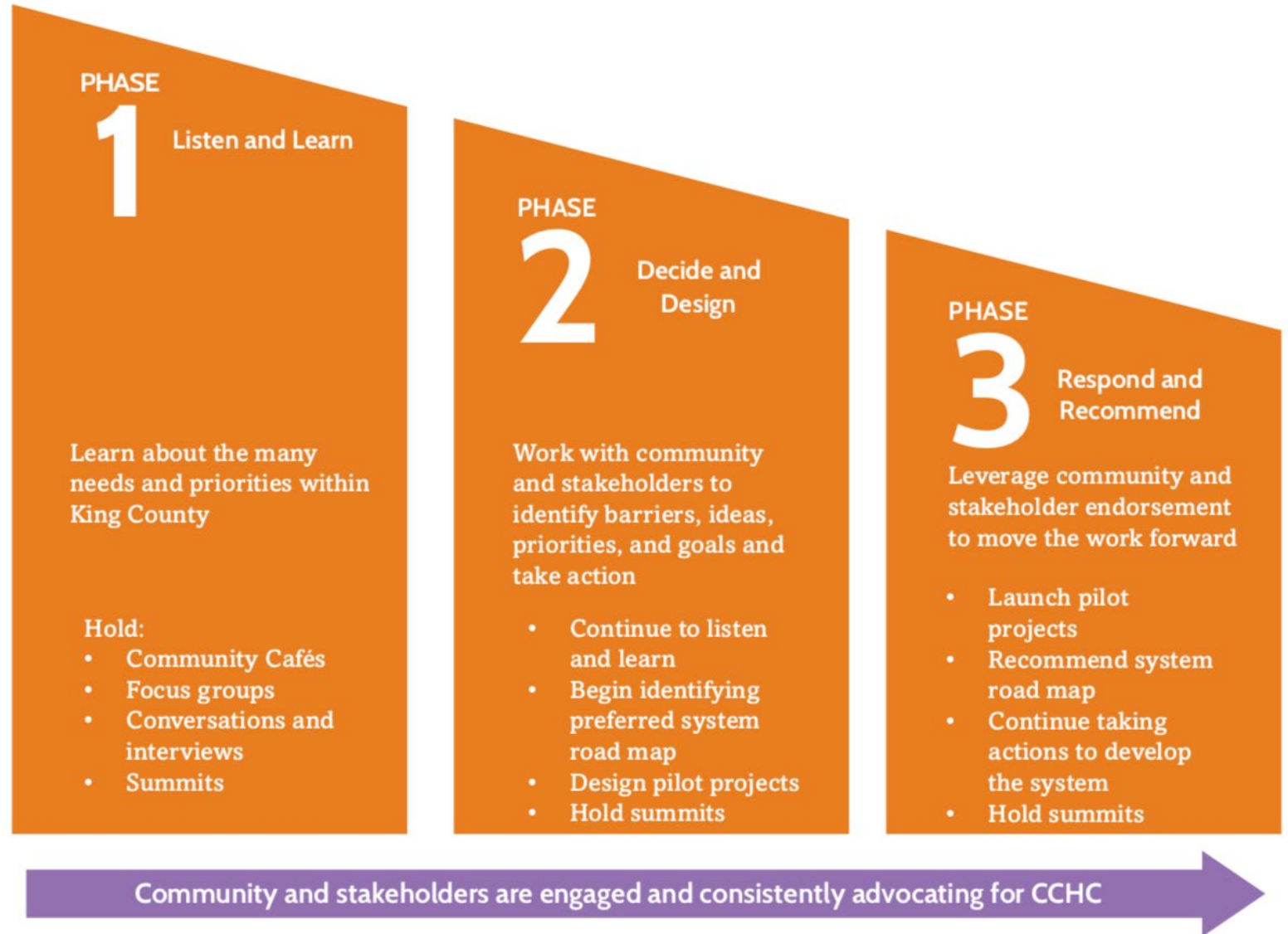
Our Purpose

Develop an accessible system through which different people offering child care health consultation services are connected, supported, well-trained, and working together to address unmet needs and alleviate race- and place-based inequities.



Phases of the Work

- Engage a broad set of stakeholders and insights
- Connect and explore with those who provide consultation
 - BSK grantees
 - PH-SKC
 - Private consultants
 - Others
- Take early actions
- Make recommendations for broader change



Draft Community Agreements

- **Participate** - Stay curious, ask questions, and share your thoughts and opinions in ways that work for you.
- **Be present** - We encourage you to be mindful of feel. Practice good self-care.
- **Practice reflective listening** - Try to understand others' perspectives and confirm that you understand. Assume good intent.
- **Be respectful**
- **Stay focused on children** - We are here to serve children and their families.

Framing Our Exploration

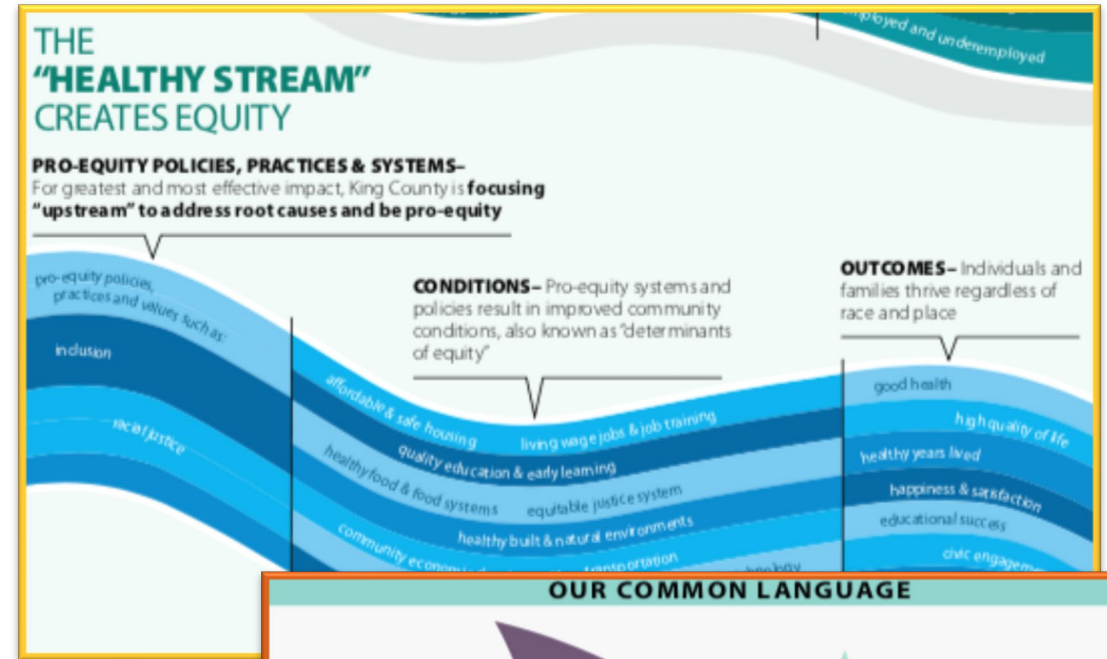
Why are we prioritizing racial equity?

Is there work on which we can build?

How can we maintain focus on this?

Some sources:

- County Children and Youth Advisory Board
- King County Racial Equity Theory of Change
- King County Racial Equity Definitions
- Early Learning Advisory Council Equity Questions



Our Plans for the Day

Agenda

- ✓ Welcome
- ✓ Appreciative inquiry
- ✓ Considering our opportunities
- ✓ Break
- ✓ Identifying what needs to change
- ✓ Naming next steps

Materials

- Packet materials
- Materials on the walls
- Cards - Other participants?
- Cards – Important reading?
- Cards – Interest in helping plan?
- Evaluations

Past, Current & Future Policies, Practices & Systems

Where have we been?

What should we bring with us?

Where should we go?

- Work individually or with others
- Use one post-it for each milestone
- Add a red sticker for things we should bring forward
- Be prepare to share a thought if you have one



Considering Our Opportunities

Highlights from our colleagues Amy Bender and Ellen Flamiatos

A few thoughts to get the ball rolling...

- Approach - *What are key elements of your approach to supporting children's health?*
- Role – *What must a consultant be able to know and do to be successful?*



Amy Bender Northwest Center

Approach - *What are key elements of your approach to supporting children's health?*

- Strengths-based
- Provider-selected goals
- Transparent NWC IMPACT philosophy and our value of inclusion
- Support health holistically
- Really get to know providers we are supporting
- Trauma-informed and equity lens
- Collaborative and multidisciplinary team
- Universal developmental screenings



Amy Bender Northwest Center



Role – *What must a consultant be able to know and do to be successful?*

- NWC's 'Approach' strategies listed above
- Relationship building
- Reflective; of yourself and others
- Celebrate wins / strengths-based
- Empathetic
- Education
- Community resources
- Translate, synthesize, and customize knowledge for each individual provider
- Open to learning and integrating other approaches
- Professional
- Work well on a multi-disciplinary team

Ellen Flamiatos

Public Health - SKC

Approach - *What are key elements of your approach to supporting children's health?*

- Building a trusting and mutually respectful relationship with the teachers and director(s)
- Having a multi-disciplinary consultation team
- Using a trauma informed lens when consulting with teachers
- Support healthy and safe early learning care settings





Ellen Flamiatos

Public Health - SKC

Role – *What must a consultant be able to know and do to be successful?*

- Nurse consultant with Bachelors in Science with pediatric experience
- Scope of practice: professional education and practice to assess and evaluate children, their environment and overall well-being.
- Good researcher
- Large lens of knowledge, as well as advocacy abilities and policy writing
- Nurse consultant provides observation and/or intervention and staff education
- Professional relationship with the directors/owner of the center/home

Questions and Highlights

What questions do you have for our colleagues?

- *What ideas did you hear from the presenters that show promise for broader application?*
- *ELAC equity question: what data and information are missing?*

Break



Identifying What Needs to Change

Purposes:

- Deeply understand the conditions that need to change to meet the needs of all children and close opportunity gaps.
- Help us see from different vantage points and inform our efforts to address inequities.
- Develop an overall picture of what needs to change.

Successive small group conversations focused on the same question:
“What most needs to change to realize the system that children need?”

- Session 1 – Our role (provider, coach/consultant, system planner/supporter/other)
- Session 2 – Our time in the field (<5 years , 5-10 years, 10+ years)
- Session 3 – Our racial and ethnic identity (People of color, Self-defined, White)

Share your thoughts:

- ✓ Comments in small group
- ✓ Comments on post-it notes
- ✓ Comments in the whole group report out

Identifying What Needs to Change

ELAC Equity Questions:

- *How do access and benefit for kids, families, and early learning educators of color differ in our current system?*
- *What unintended consequences does the current system create?*



Next Steps

- Proceedings from today
- **March 27th** summit
- **Ideas shared today:** Articles, other participants, planning team members
- **Checking in:** Racial equity lens
- Evaluating the day





Connecting & Sharing