

WELCOME

EARLY LEARNING
ISSUES THAT IMPACT CHILDREN

GROUP PURPOSE:

- INITIAL VISION FOR AN ACCESSIBLE SYSTEM
- CHILDCARE HEALTH CONSULTATION SERVICES
- CONNECTED SUPPORTED WELL-TRAINED WORKING TOGETHER

MEETING PURPOSES:

- HEAR FROM ADDITIONAL PARTNERS
- CONSIDER ADVERSELY AFFECTED
- IDENTIFY EARLY ACTIONS
- DEVELOP INITIAL STRATEGIC ACTIONS
- STRENGTHEN OUR RELATIONSHIPS

LISTENING

COMMUNITY AGREEMENTS

- PARTICIPATE
- BE PRESENT
- PRACTICE REFLECTIVE LISTENING
- BE RESPECTFUL
- STAY FOCUSED ON CHILDREN
- EMBRACE DISCOMFORT

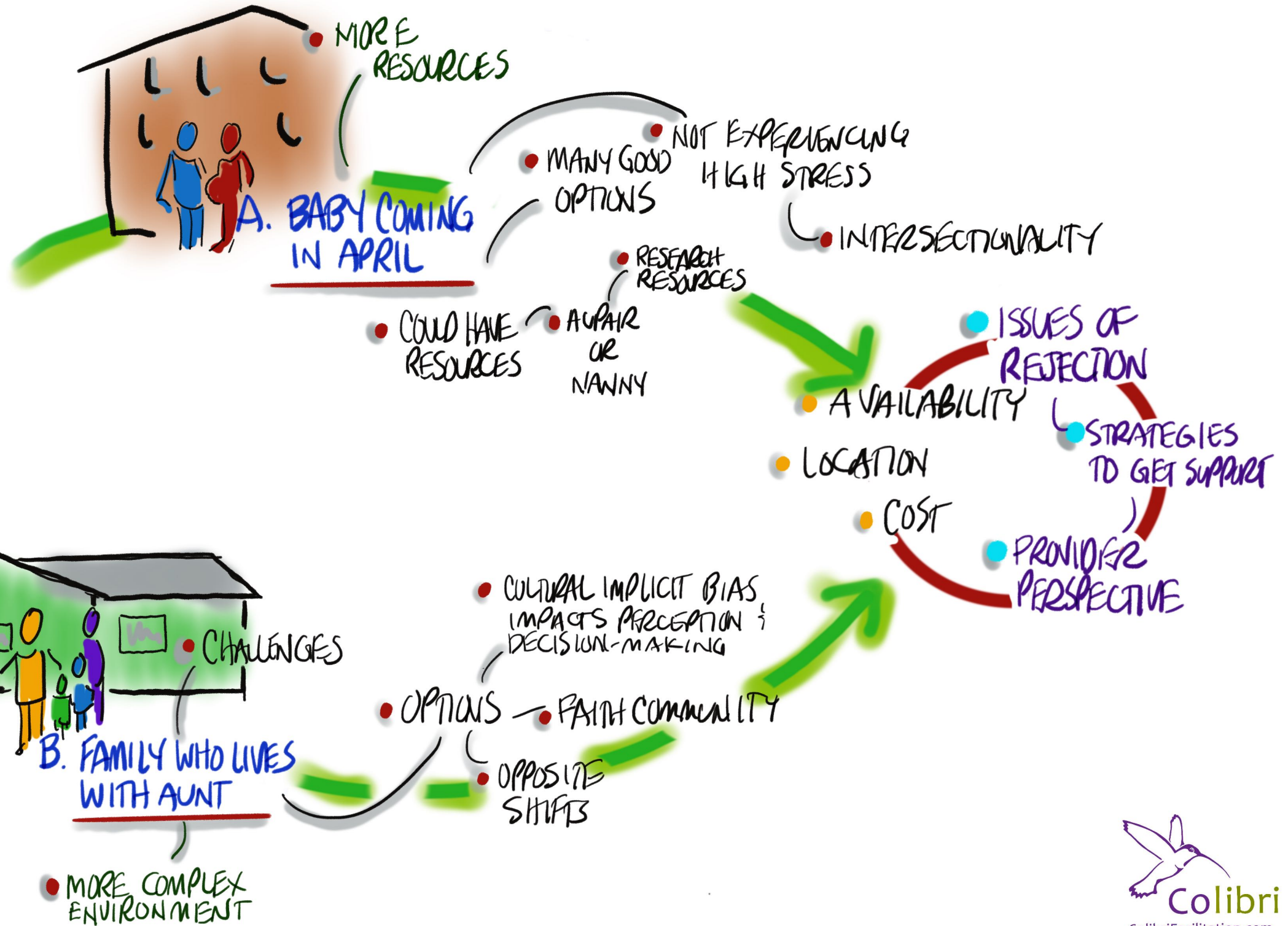
CO-CREATE
BRAVE SPACE
TO SPEAK YOUR
TRUTH

TO STRATEGIES

FEEDBACK LOOP

HEAR FROM PROVIDERS

EXPLORING HOW WE ARE SITUATED DIFFERENTLY

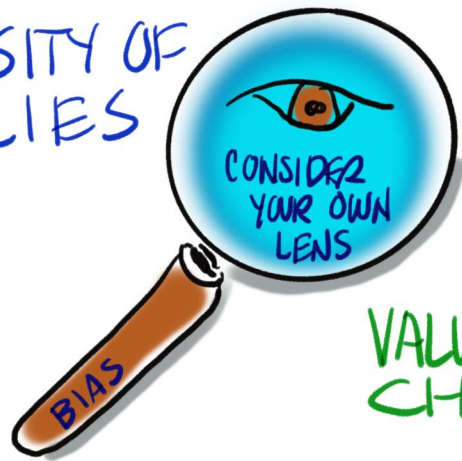


BIASES and how they impact our WORK

LEARNING FROM OUR COLLEAGUES EXPERIENCE

INFORMING OUR THINKING OF A PREFERRED SYSTEM

DIVERSITY OF FAMILIES



VALUE AND RESPECT CHILDREN



EVALUATING THIS EFFORT

- TRAINING & SUPPORT
- BARRIERS TO FACILITATION

- QUANTITATIVE

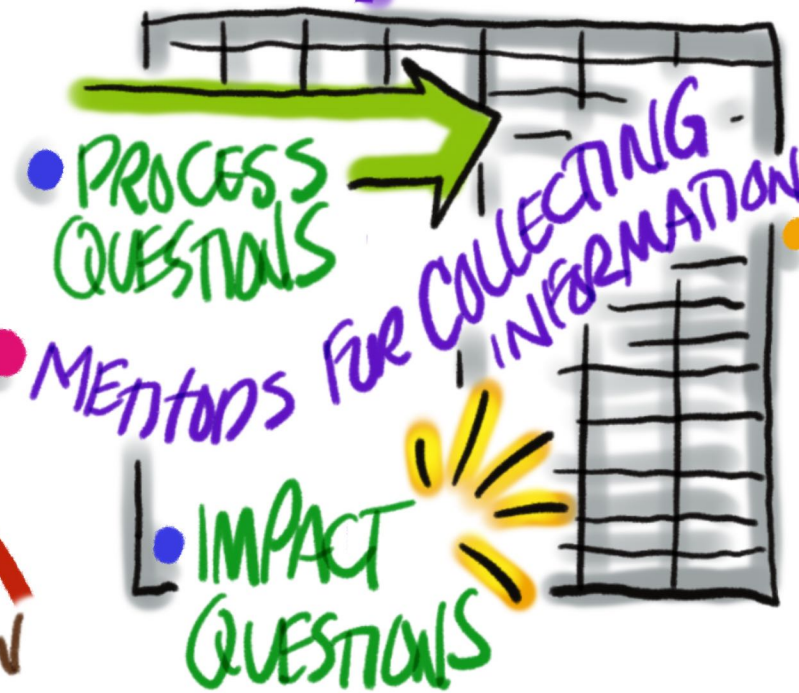
- DATA TRANSFER

- QUALITATIVE

- FOLLOW UP ASSESSMENT

- 1ST SET OF DATA SUBMISSIONS IN JULY

- SUPPORT DATA COLLECTION



WHAT'S NEXT?

NOT COLLECTING ENOUGH DATA

INDIVIDUAL LEARNING PLANS

LOOK ACROSS ALL SERVICE DELIVERY

SERVICE DELIVERY

PUBLIC HEALTH

COMMUNITY INFORMED

- CARDEA: EVALUATION & RESEARCH

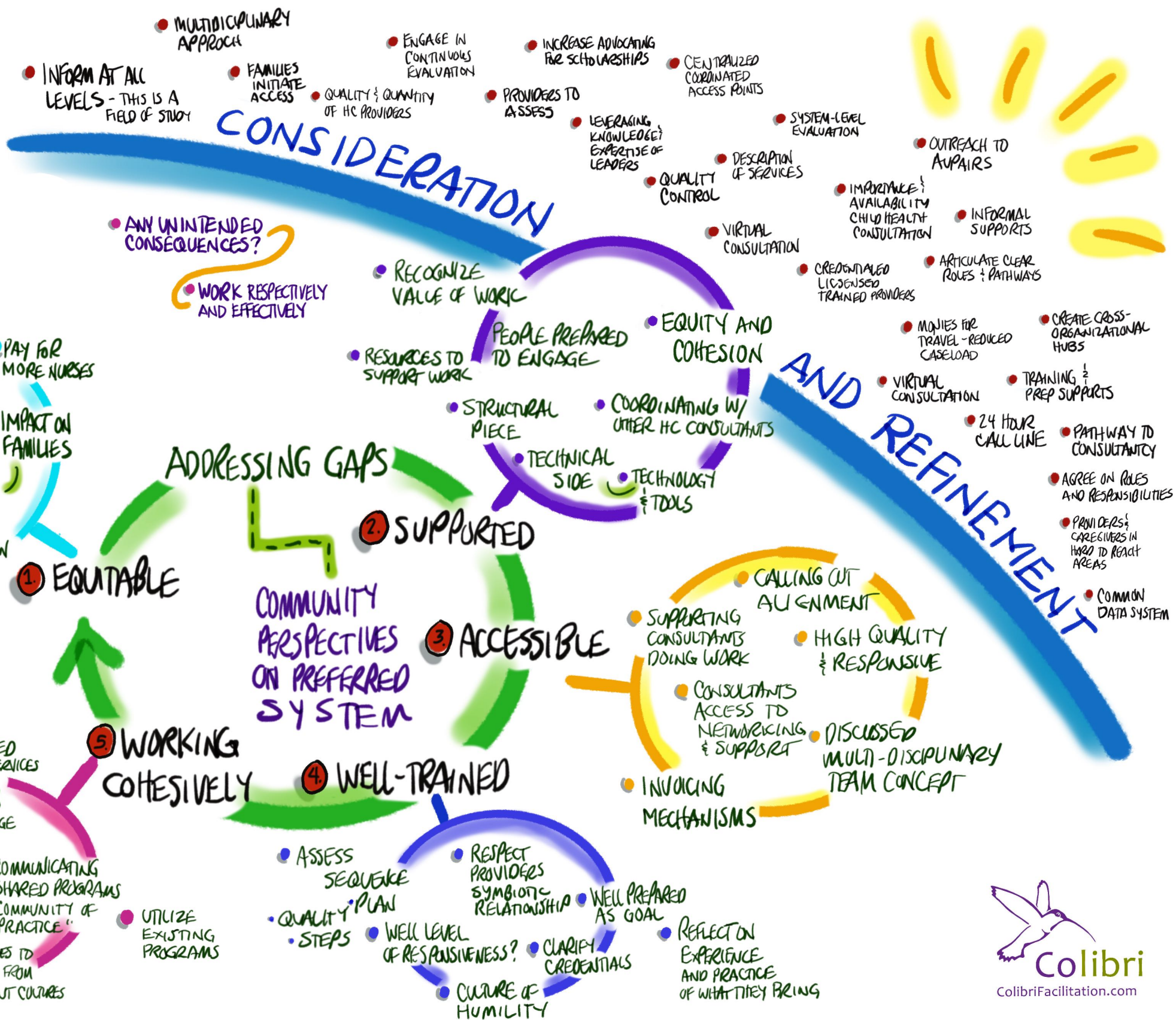
GATHER INFORMATION

- DESCRIBE ELEMENTS UNIQUE DIFFERENCES

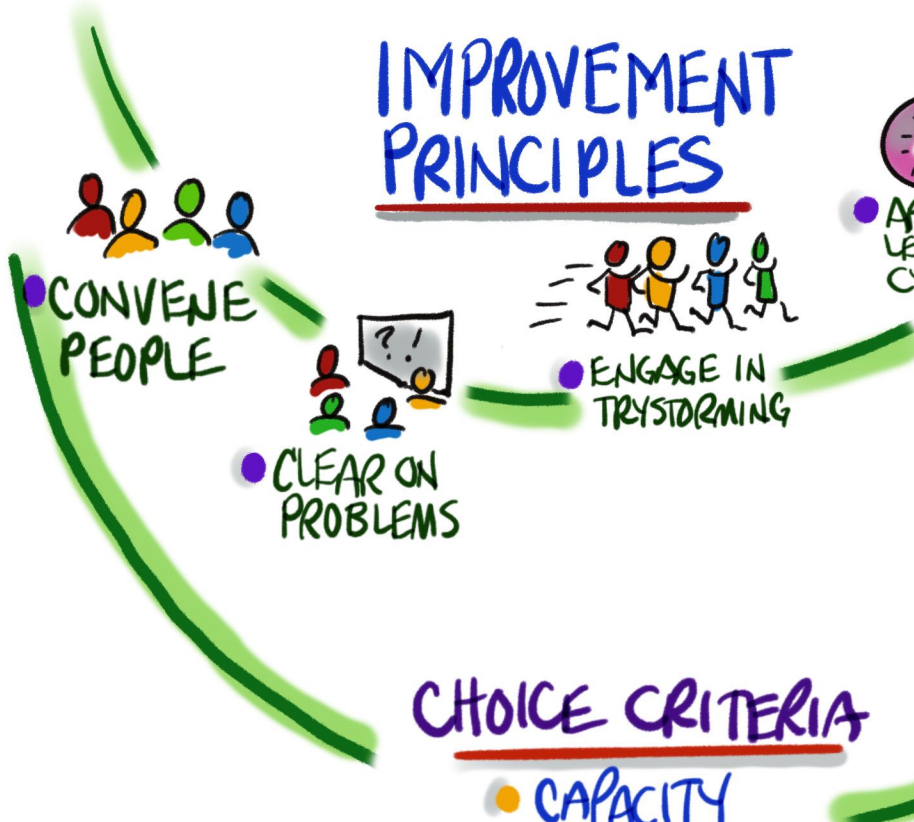
- BARRIERS TO FACILITATION

- CCHC CONTRIBUTES TO OUTCOMES

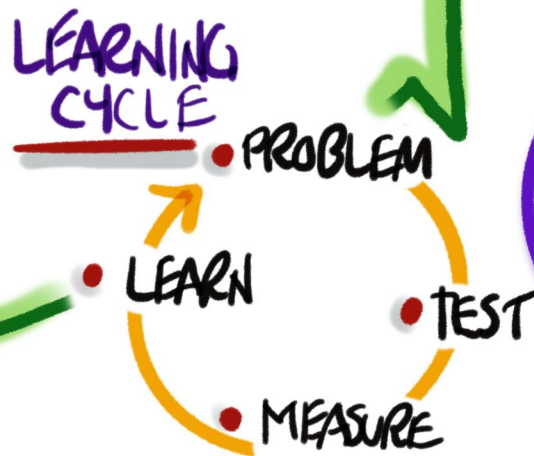
ENVISIONING OUR PREFERRED SYSTEM



EARLY WIN PROJECTS AND NEXT STEPS

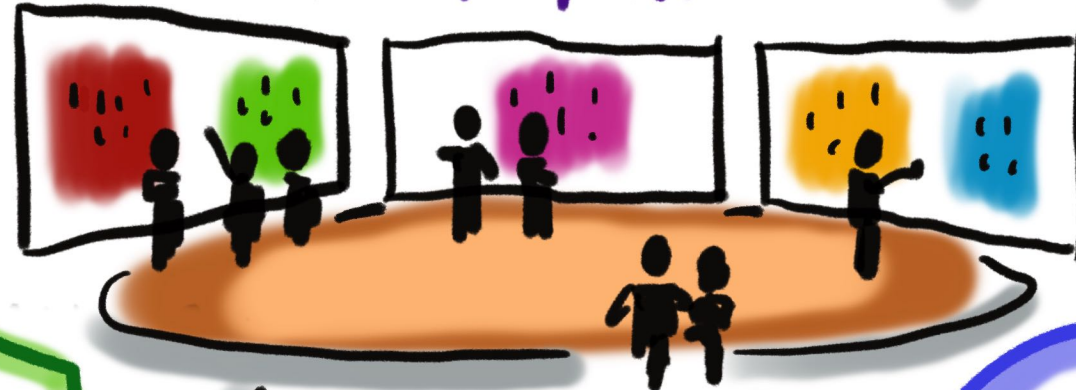


- ## CHOICE CRITERIA
- CAPACITY
 - AUTHORITY
 - TIME



CREATE & PROVIDE MORE TRAININGS IN VARIOUS LANGUAGES

GALLERY WALK



STRENGTHEN CONVERSATION BETWEEN LICENSING, EARLY ACHIEVERS, COACHES & CHILD CARE HEALTH CONSULTANTS

CLEARLY DEFINE CHILD CARE HEALTH CONSULTATIONS SCOPE OF WORK

DISSEMINATE INFORMATION ABOUT CHILD CARE HEALTH CONSULTATION TO CHILD CARE PROVIDERS AND CAREGIVERS INCLUDING FFN'S

ADVOCACY FOR INCREASED FUNDING THROUGH LEGISLATURE